

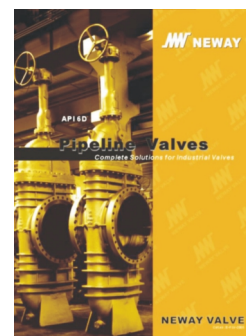
Cat.no.:E-PS



Cat.no.:E-FBV



Cat.no.:E-TMBV



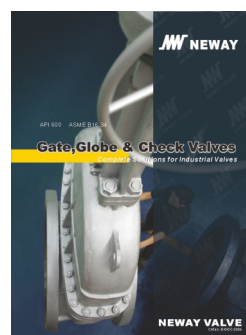
Cat.no.:E-PLV



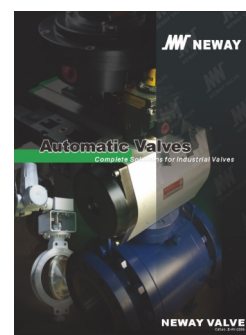
Cat.no.:E-TOV



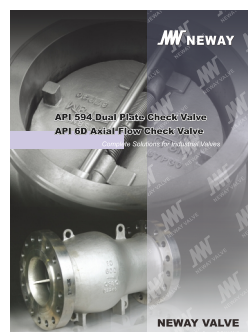
Cat.no.:E-DOV



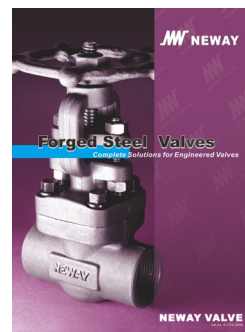
Cat.no.:E-GGC



Cat.no.:E-AV



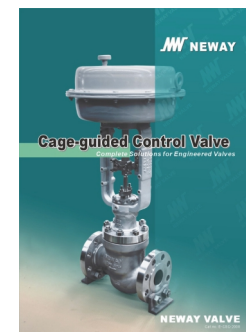
Cat.no.:E-DAV



Cat.no.:E-FSV



Cat.no.:E-CSS



Cat.no.:E-CSC

**MW NEWAY**  
NEWAY VALVE (SUZHOU) CO., LTD.

No.666 Taishan Road, New District,  
Suzhou,P.R. China  
Post Code:215129  
Tel: 86-512-666-51365  
Fax: 86-512-666-51360  
E-Mail: overseas.sales@neway.com.cn  
www.newayvalve.com

Distributed by:

Cat.no.:E-CPS-2016

**MW NEWAY**

# Control Valve

Complete Solutions for Industrial Valves

**NEWAY VALVE**

Cat.no.:E-CPS-2016



# Table of Contents

## Introduction

- 1 Quality Commitment
- 2 Advanced Manufacturing & Quality Control
- 3 Technical Innovation
- 4~5 Special Products
- 6~7 Products Views

## Product Introduction

- 8~11 Straight Travel Valve
- 12~14 Angle Travel Valve
- 15~17 Multistage Pressure Reducing Control Valve
- 18~19 Self-Operated Control Valve
- 20 Pneumatic Actuator



## Complete Solutions for Industrial Valves

As a global leader of valve manufacturing, Neway (SSE:603699) is dedicated to the production, research, and development of industrial valves. Neway is committed to providing complete valve solutions to all industries through advanced engineering and innovation.

Neway’s product line includes Ball, Gate, Globe, Check, Butterfly, Nuclear, Control, Subsea, Safety valves. Our high quality standards and innovative ability are recognized by many global end users and EPCs. Neway valves are utilized in a wide variety of industries and working conditions such as Gas, Oil, Refining, Chemical, Coal Chemical, Offshore, FPSO, Air Separation, LNG, Nuclear Power, Power Generation, and Pipeline Transmission applications.

## Facilities & Service

Neway has developed a sophisticated multi-plant management system operating one valve assembly plant, one API6A valve plant, three foundries, and one R&D center. Our newest assembly plant was expanded in 2013, and it now covers 35,000 square meters.

Advanced software (ANSYS, FE-Safe, CF-Design, Siemens PLM and NX) is applied here at Neway for the Research & Development of products. We use SAP to control the traceability and status of all products during the manufacturing process. In order to ensure the safety, eco-friendliness, and reliability of our products, we use the most advanced fire-safe, cryogenic, high pressure, and fugitive emission test equipment.

As part of Neway’s global strategy, to provide better service to our customers, we have established our overseas subsidiaries in North America, Brazil, Netherlands, Italy, Singapore, and Dubai along with over 80 agents and distributors worldwide.

## High Quality, High Value

Neway is dedicated to continuous improvement. We maintain a quality management system that encompasses our entire operation from order entry to final inspection. Through continuous efforts, Neway's products have successfully obtained industry certifications, including ASME UV & NB, NBBI, KGS, CE, CCS, and BV approvals.

## Quality Commitment

Neway recognizes the importance of valve quality for the safety and protection of personnel health and property. It is our quality commitment to focus our resources to provide our customers with first class products at a competitive price,that are designed, manufactured, inspected and tested in accordance with our customer's specifications and that comply with all international standards.

With respect to the facts that the current industrial standards do not always take into consideration the likelihood and consequences of possible deterioration in service, related to specific service fluids or the external environment in which they operate. Our customers are requested to keep an open line of communication with our engineering department to identify and implement standards, that will provide valves with the possibility of deterioration in service, so as to ensure safety over the valves expected lifetime.





The latest computer technology has been extensively applied in NEWAY manufacturing, which includes a large number of numeric control machines (machining center, CNC horizontal and vertical lathe and CNC drilling machine) and ERP management system. Additionally, the data through all factories have been connected and shared. These facilitate resource integration, boost productivity, evidently enhancing machining quality and tightening process control.



NEWAY developed comprehensive and advanced inspection and test facilities to control the quality from rough castings or forgings to final products, which enable us to perform radiographic test, liquid penetrant test, magnetic-particle test, spectrum analysis, Material Positive Identification (MPI), impact test, tensile test, hardness test, fire safe test, cryogenic test, vacuum test, low fugitive emission test, high pressure gas test, ultrasonic testing and hydrostatic test.



With cutting-edge computer technology utilized, NEWAY Technical Center focuses on providing outstanding quality products and developing new lines. There is a highly educated and well-trained engineering team, supported by a comprehensive internal computer network which links the entire operations of design, manufacturing and administration.

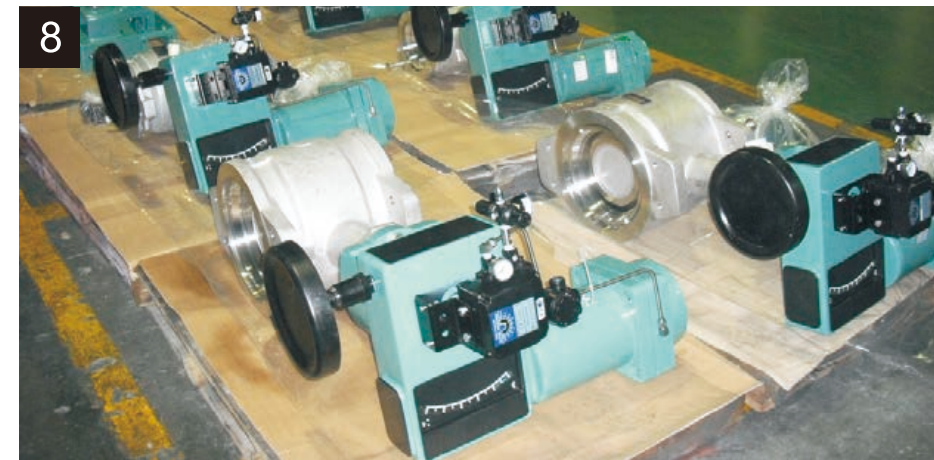
NEWAY design philosophy is to develop a safe and cost-efficient valve. We introduced the latest Ansys, Fe-safe, CF-design and NX software for all our new product design research to make advanced finite element analysis, fluid and fatigue analysis to virtually verify the new design prior to production, which has resulted in dramatically shortening development duration and assuring a safe and cost-efficient final product.







- 1. Single Seat Control Valve
- 2. Pneumatic Triple Offset Butterfly Valve
- 3. Jacket Control Valve
- 4. Cage Guide Control Valve
- 5. Electric Trunnion Mounted Ball Valve



- 6. High Pressure Control Valve
- 7. Abrasion Resistance Angle Control Valve
- 8. Eccentric rotary control valve
- 9. Cryogenic Control Valve
- 10. V-Notch Ball Valve



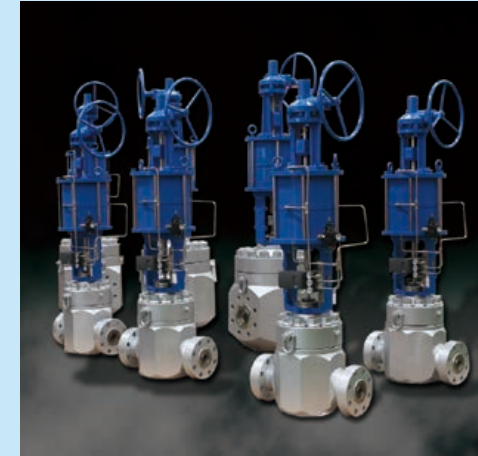
## High Temperature Bellows Control Valve

**Project:** Continuous polymerization project of Nylon 66 chips  
**Medium:** heat-conduction oil  
**Working Condition:** operation temperature: 320 °C  
**Valve Type:** high temperature bellows single seat control valve  
**Condition Characteristics:** high temperature, high permeability



## High Pressure Control Valve

**Project:** mud pump and fracturing pump performance test  
**Purpose:** loading the system for mud pump and fracturing pump  
**Medium:** ambient temperature water  
**Working Condition :** Intel pressure: 1~105 MPa, Outlet pressure: ≤1 MPa  
**Condition Characteristics :** high pressure drop and broad flow control range



## High Temperature and Pressure Control Valve

**Project:** steam cooling station of thermal power plant  
**Medium:** steam  
**Working Condition:** medium temperature: 430 °C  
**Inlet pressure:** 3.53 MPa  
**Outlet pressure:** 0.9 MPa  
**Valve Size:** NPS 10 Class 600 ; NPS 16 Class 300  
**Condition Characteristics:** high pressure and temperature, high flow-rate, noisy



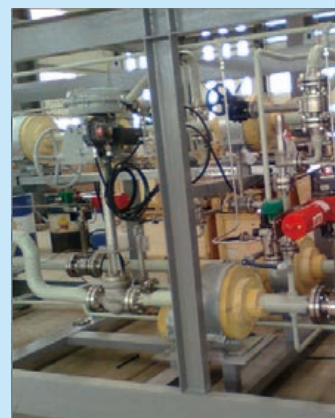
## Safety Shut-off Valve

**Project:** gas transmission pipeline system  
**Valve Size:** NPS 6, 8, 10 Class 600  
**Working Condition:** Inlet pressure: 4~5.7 MPa, Shutoff pressure: 5.7 MPa  
**Requirement:** Leakage class V Failure position: FC  
**Condition Characteristics:** using the pipe medium (Natural gas) as actuator power



## Cryogenic Control Valve

**Project:** LNG receiving station of Jiangsu Province  
**Purpose:** LNG flow control  
**Medium:** LNG  
**Working Condition:** temperature: -160 °C,  
Inlet pressure: 2~3 MPa  
**Condition Characteristics:** Cryogenic



## Jacket Control Valve

**Project:** Natural gas treatment project for high sulfur gas field  
**Plant Name:** sulfur loading device  
**Medium:** liquid sulfur  
**Working Condition:** pressure: 0.25 MPa, temperature: 125~135 °C  
**Condition Characteristics:** high viscosity, crystallization





CSS Series Single Seated Control Valve

Product Range

Size	3/4"~12"
Rating	ANSI Class 150~2500
Body Material	CS, SS, Alloy Steel, Duplex SS etc.
Trim material	SS, Alloy Steel and Duplex SS etc.
Face-to-face dimension	ISA S75.03 (ANSI Class 150~600) ISA S75.16 (ANSI Class 900~2500)
Bonnet Type	Standard, Extension, Low temperature
Connection Type	FF, RF, RTJ, LF, BW etc.
Flow Characteristics	Equal percentage, Linear, Quick Open
Rangeability	50:1
Operating temperature	-196°C~538°C
Operation	Pneumatic, Electric
Design Standard	IEC60534
Valve construction	Globe body and single-seated plug
Leakage Class	FCI 70-2 Class IV, V, VI (soft seat)

For more details, see NEWAY catalog No.E-CSS



Application:

Petroleum, chemical & metallurgy  
Shipbuilding, electric power, building material  
LNG, light industry

Optional Actuator:

Pneumatic Actuator: Series PDL ,PCL etc.  
Electric Actuator: AUMA, ROTORK etc.

CBS Series Bellows Seal Single Seated control valve

Product Range

Size	3/4"~8"
Rating	ANSI Class 150~1500
Body Material	CS, SS, Alloy, Duplex SS etc.
Trim material	SS, Alloy Steel and Duplex SS etc.
Bellows Material	304, 316, 316 Ti, INCONEL etc.
External Dimensions	ISA S75.03 (ANSI Class 150~600) ISA S75.16 (ANSI Class 900~2500)
Bonnet Type	Standard, Extension, Low temperature
Connection Type	FF, RF, RTJ, LF, BW etc.
Flow Characteristics	Equal percentage, Linear, Quick Open, Linear, Quick Open
Rangeability	50:1
Operating Temperature	-196°C~538°C
Operation	Pneumatic, Electric
Design Standard	IEC60534
Valve construction	Globe body. Bellows seal and single-seated plug
Leakage Class	FCI 70-2 Class IV, V, VI (soft seat)

For more details, see NEWAY catalog No.E-CBS



Application:

Petroleum, chemical & metallurgy  
Spaceflight, aviation, ship, nuclear power and military  
Suitable for service in need of bubble-tight shutoff

Optional Actuator:

Pneumatic Actuator: Series PDL ,PCL etc.  
Electric Actuator: AUMA, ROTORK etc.

CSC Series Cage Guided Control Valve

Product Range

Size	1-1/2"~20"
Rating	ANSI Class 150~2500
Body Material	CS, SS, Alloy, Duplex SS etc.
Trim material	SS, Alloy Steel and Duplex SS etc.
Face-to-face dimension	ISA S75.03 (ANSI Class 150~600) ISA S75.16 (ANSI Class 900~2500)
Bonnet Type	Standard, Extension, Low temperature
Connection Type	FF, RF, RTJ, LF BW etc.
Flow Characteristics	Equal percentage, Linear, Quick Open
Rangeability	50:1
Operating temperature	-196°C~538°C
Operation	Pneumatic, Electric
Design Standard	IEC60534
Valve construction	Globe body and balanced trim
Leakage Class	FCI 70-2 Class IV, V, VI (soft seat)

For more details, see NEWAY catalog No.E-CSC



Application:

Petroleum, chemical & metallurgy  
Shipbuilding, electric power, building material  
LNG, Light industry  
Can be used for fluid regulation  
Suitable for a larger pressure difference

Optional Actuator:

Pneumatic Actuator: Series PDL, PCL etc.  
Electric Actuator: AUMA, ROTORK etc.



Application:

Petroleum, chemical,metallurgy, spaceflight,  
aviation, ship, nuclear power and military  
Suitable for low leakage service

Optional Actuator:

Pneumatic Actuator: Series PDL ,PCL etc.  
Electric Actuator: AUMA, ROTORK etc.

CBC Series Cage Guided Control Valve

Product Range

Size	1-1/2"~12"
Rating	ANSI Class 150~1500
Body Material	CS, SS, Alloy, Duplex SS etc.
Trim material	SS, Alloy Steel and Duplex SS etc.
Bellows Material	304, 316, 316 Ti, INCONEL etc.
External Dimensions	ISA S75.03 (ANSI Class 150~600) ISA S75.16 (ANSI Class 900~2500)
Bonnet Type	Standard, Extension, Low temperature
Connection Type	FF, RF, RTJ, LF, BW etc.
Flow Characteristics	Equal percentage, Linear, Quick Open
Rangeability	50:1
Operating Temperature	-196°C~538°C
Operation	Pneumatic, Electric
Design Standard	IEC60534
Valve construction	Globe body. Bellow seal and single-seated plug
Leakage Class	FCI 70-2 Class IV, V, VI (soft seat)

For more details, see NEWAY catalog No.E-CBC



CFS Series Plastic-lined Control Valve

Product Range

Size	3/4"~8"
Rating	ANSI Class 150
Body Material	WCB lined with F46 or PFA
Trim material	F316+F46or PFA, HC etc.
Bellows Material	PTFE
Bonnet Type	Standard type. Double seal of bellow and packing.
Connection Type	RF
Flow Characteristics	Equal percentage, Linear, Quick Open
Rangeability	30:1
Operating temperature	-29C°~120°C
Operation	Pneumatic, Electric
Design Standard	IEC60534
Valve construction	Globe and cast body lined with FEP, single seated
Leakage Class	FCI 70-2 Class IV

For more details, see NEWAY catalog No.E-CFS



Application:

Papermaking, chemical, petroleum, chemical fiber, electric power,metallurgy, pharmaceutical and environmental protection

Optional Actuator:

Pneumatic Actuator: Series PDL, PCL etc.  
Electric Actuator: AUMA, ROTORK etc.

CAB Series Abrasion Resistance Angle Control Valve

Product Range

Size	2"~12"
Rating	ANSI Class 150~1500
Body Material	CS, SS, Alloy, Duplex SS etc.
Trim material	SS, Alloy Steel and Duplex SS etc.
Body Type	Angle
Bonnet Type	Standard, Extension
Seat type	Venturi seat
Connection Type	FF, RF, RTJ, LF etc.
Flow Characteristics	Equal percentage, Linear , Quick Open
Rangeability	50:1
Operating temperature	-196°C~538°C
Design Standard	IEC60534
Valve construction	Globe and plug valve
Leakage Class	FCI 70-2 Class IV, V

For more details, see NEWAY catalog No.E-CAB



Application:

Chemical,metallurgy and coal chemical industry  
Suitable for applications containing solid particles and flashing

Optional Actuator:

Pneumatic Actuator: Series PDL ,PCL etc.  
Electric Actuator: AUMA, ROTORK etc.



Application:

Used in petroleum, chemical, metallurgy, electric power, building material, LNG and light industry  
Converging and diverging service

Optional Actuator:

Pneumatic Actuator: Series PDL ,PCL etc.  
Electric Actuator: AUMA, ROTORK etc.

CTD (M) Series Three-way control valve for converging and diverging service

Product Range

Size	1"~12"
Rating	ANSI Class 150~600
Body Material	CS, SS, Alloy, Duplex SS etc.
Trim material	SS, Alloy Steel and Duplex SS etc.
Face-to-face Dimensions	ISA S75.03 (ANSI Class 150~600)
Bonnet Type	Standard, Extension, Low temperature
Connection Type	FF, RF, RTJ, LF BW etc.
Flow Characteristics	Equal percentage, Linear
Rangeability	50:1
Operating temperature	-196°C~538°C
Operation	Pneumatic, Electric
Design Standard	IEC60534
Valve construction	Three-way globe and plug valve
Leakage Class	FCI 70-2 Class IV, V, VI (soft seat)

For more details, see NEWAY catalog No.E- CTD (M)



Application:

Petroleum, chemical & metallurgy  
Shipbuilding, electric power, building material  
LNG, light industry  
Applicable for low leaking rate requirements and service inclined to crystallization

Optional Actuator:

Pneumatic Actuator: Series PDL ,PCL etc.  
Electric Actuator: AUMA, ROTORK etc.

CSS-JT Series Jacket Control Valve

Product Range

Size	3/4"~8"
Rating	ANSI Class 150~600
Body Material	CS, SS, Alloy, Duplex SS etc.
Trim material	SS, Alloy Steel and Duplex SS etc.
Face-to-face Dimensions	ISA S75.03 (ANSI Class 150~600)
Bonnet Type	Standard ,Extension, Low temperature
Connection Type	FF, RF, RTJ, LF BW etc.
Flow Characteristics	Equal percentage, Linear, Quick Open
Rangeability	50:1
Operation	Pneumatic, Electric
Design Standard	IEC60534
Valve construction	Globe and plug valve
Leakage Class	FCI 70-2 Class IV, V, VI (soft seat)

For more details, see NEWAY catalog No.E-CSS



CBV Series V-Notch Ball ValveProduct Range

Size	1"~20"
Rating	ANSI Class 150~600
Body Material	CS, SS, Alloy, Duplex SS etc.
Trim material	SS, Alloy Steel and Duplex SS etc.
Face-to-face Dimensions	ISA S75.04 (ANSI Class 150~600)
Connection Type	WF, WJ, RF, RTJ, FF etc.
Flow Characteristics	Equal percentage
Rangeability	300:1
Operating temperature	Hard sealing: -40°C~350°C; Soft sealing: -40°C~180°C;
Operation	Pneumatic, Electric
Design Standard	IEC60534
Valve construction	Cylinder valve with V-shaped notch
Leakage Class	FCI 70-2 Class IV, V, VI (soft seat)

For more details, see NEWAY catalog No.E-CBV



Application:

Papermaking, chemical, petroleum, chemical fiber, electric power,metallurgy, pharmaceutical and environmental protection.  
Appropriate for throttling the service fluids containing strong acid, alkali and oxidant, such as hydrochloric acid,sulfuric acid,hydrofluoric acid,nitric acid and aqua regia.

Optional Actuator:

Pneumatic Actuator: Series NW etc.  
Electric Actuator: AUMA, ROTORK etc.

B Series Floating Ball valveProduct Range

Size	1/2"~10"
Rating	ANSI Class 150~2500
Body Material	Forged CS & SS etc.
Trim material	Canbon Steel, SS and Duplex SS etc.
Face-to-face Dimensions	ASME B16.10
Connection Type	WF, WJ, RF, RTJ, FF, NPT
Operating temperature	-196°C~400°C
Operation	Pneumatic, Electric
Design Standard	BS 5351, API 6D, ISO 17292
Fire safe test certified	API 607, API 6FA
Low emission certified	ISO 15848, TA-LUFT
Leakage Class	API 6D

For more details, see NEWAY catalog No.E-B



Application:

Used in long-distance transport pipes of petroleum and natural gas  
Able to block the service fluids  
Appropriate for water, oil and gas

Optional Actuator:

Pneumatic Actuator: Series NWS etc.  
Electric Actuator: AUMA, ROTORK etc.



Application:

Petrochemical, metallurgy and coal chemical industry

Optional Actuator:

Pneumatic Actuator: Series PCR, NW etc.  
Electric Actuator: AUMA, ROTORK etc.

CBE Series Camflex ValveProduct Range

Size	1"~16"
Rating	ANSI Class 150~600
Body Material	CS, SS, Alloy, Duplex SS etc.
Trim material	SS, Alloy Steel and Duplex SS etc.
Face-to-face Dimensions	ISA S75.04 (ANSI Class 150~600)
Flow Characteristics	Linear
Rangeability	100:1
Operating temperature	Hard sealing: -195°C~400°C Soft sealing: -73°C~204°C
Operation	Pneumatic, Electric
Design Standard	IEC60534
Valve construction	Cylinder body and eccentric rotary design
Leakage Class	FCI 70-2 Class IV, VI (soft seat)

For more details, see NEWAY catalog No.E-CBE



Application:

Oil & natural gas transmission lines  
Shut off media  
Suitable for working media of water, oil and gas

Optional Actuator:

Pneumatic Actuator: Series NWS etc.  
Electric Actuator: AUMA, ROTORK etc.

BS Series Side Entry Ball ValveProduct Range

Size	2"~60"
Rating	ANSI Class 150~2500
Body Material	Forged CS & SS, etc.
Trim material	Canbon Steel, SS and Duplex SS etc.
Face-to face Dimensions	ASME B16.10
Connection Type	WF, WJ, RF, RTJ, FF, NPT
Operating temperature	-196°C~400°C
Operation	Pneumatic, Electric
Design Standard	BS 5351, API 6D, ISO 17292
Fire safe test certified	API 607, API 6FA
Low emission certified	ISO 15848, TA-LUFT
Leakage Class	FCI 70-2 Class IV, V, VI

For more details, see NEWAY catalog No.E-Bs



TB Series Double offset Butterfly Valve

Product Range

Size	2"~72"
Rating	ANSI Class 150~600
Body Material	Forged CS & SS etc.
Seat Material	NBR, EPDM, VITON, EPTFE
Face-to-face Dimensions	API 609, ISO 5752
Connection Type	Wafer, Lug, Double Flange
Flow Characteristics	Approximate Equal percentage
Operating temperature	-196°C~204°C
Operation	Pneumatic, Electric
Design Standard	API 609, ASME B16.34
Structure	Double offset
Leakage Class	FCI 70-2 Class IV, V, VI

For more details, see NEWAY catalog No.E-TB



Application:

Petroleum, chemical, papermaking, metallurgy, shipbuilding and LNG  
Suitable for water, oil and gas service

Optional Actuator:

Pneumatic Actuator: Series NWS etc.  
Electric Actuator: AUMA, ROTORK etc.



Application:

Oil, chemical, papermaking, metallurgy, shipbuilding and LNG  
Fit for working condition of water, oil and gas

Optional Actuator:

Pneumatic Actuator: Series NWS etc.  
Electric Actuator: AUMA, ROTORK etc.

TC Series Triple offset Butterfly Valve

Product Range

Size	3"~120"
Rating	ANSI Class 150~1500
Body Material	Forged CS & SS etc.
Sealing ring	Metal with graphite, metal with PTFE and metal ring
Face-to-face Dimensions	API 609, ISO 5752
Connection Type	Wafer, Lug, Double Flange, Welded
Flow Characteristics	Approximate Equal percentage
Operating temperature	-196°C~815°C
Operation	Pneumatic, Electric
Design Standard	API 609, ASME B16.34
Structure	Triple offset
Leakage Class	FCI 70-2 Class IV, V, VI

For more details, see NEWAY catalog No.E-TC

CMN Series Multistage Pressure Reducing Control Valve

Product Range

Size	1/2"~4"
Rating	ANSI Class 900~1500
Body Material	CS, SS, Alloy, Duplex SS etc.
Trim material	SS, Alloy Steel and Duplex SS etc.
Face-to-face Dimensions	ISA S75.16 (ANSI Class 900~2500)
Bonnet Type	Standard, Extension, Low temperature
Connection Type	FF, RF, RTJ, LF BW etc.
Flow Characteristics	Equal percentage, Linear
Rangeability	50:1
Operating temperature	-196°C~538°C
Operation	Pneumatic, Electric
Design Standard	IEC60534
Valve construction	Globe body. Multi-stage pressure design
Leakage Class	FCI 70-2 Class IV, V

For more details, see NEWAY catalog No.E-CMN



Application:

Petroleum, chemical & metallurgy  
Shipbuilding, electric power, building material  
LNG, light industry  
Fit for fluid service with high differential pressure

Optional Actuator:

Pneumatic Actuator: PDL and PCL Series  
Electric Actuator: AUMA, ROTORK etc.



Application:

Petroleum, Chemical, Metallurgy  
Shipbuilding, Electric power, Building materials  
LNG, light industry etc.  
Suitable for larger differential pressure and clean medium with relaxed leakage requirements

Optional Actuator:

Pneumatic Actuator: PDL and PCL Series  
Electric Actuator: AUMA, ROTORK etc.

CMM Series Multistage Pressure Reducing Cage Guided Control Valve

Product Range

Size	1-1/2"~12"
Rating	ANSI Class 600~2500
Body Material	CS, SS, Alloy, Duplex SS etc.
Trim material	SS, Alloy Steel and Duplex SS etc.
Face-to-face Dimensions	ISA S75.03 (ANSI Class 150~600) ISA S75.16 (ANSI Class 900~2500)
Bonnet Type	Standard, Extension, Low temperature
Connection Type	FF, RF, RTJ, LF BW etc.
Flow Characteristics	Equal percentage, Linear
Rangeability	50:1
Operating temperature	-196°C~538°C
Operation	Pneumatic, Electric
Design Standard	IEC60534
Valve construction	Globe body. Multi-stage pressure drop cage.
Leakage Class	FCI 70-2 Class IV, V

For more details, see NEWAY catalog No.E-CMM

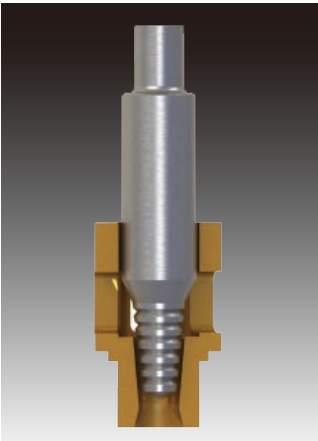


CMG Series Control Valve  
with Cascade Trims

Product Range

Size	1/2"~2"
Rating	ANSI Class 150~600
Body Material	CS, SS, Alloy, Duplex SS etc.
Trim material	SS, Alloy Steel and Duplex SS etc.
Face-to-face Dimensions	ISA S75.03 (ANSI Class 150~600)
Bonnet Type	Standard, Extension, Low temperature
Connection Type	FF, RF, RTJ, LF BW etc.
Flow Characteristics	Equal percentage, Linear
Rangeability	50:1
Operating temperature	-196°C~538°C
Operation	Pneumatic, Electric
Design Standard	IEC60534
Valve construction	Globe body and Cascade trims
Leakage Class	FCI 70-2 Class IV, V

For more details, see NEWAY catalog No.E-CMG



Application:

Petroleum, chemical & metallurgy  
Shipbuilding, electric power, building material  
LNG, light industry  
Fit for fluid service with high differential pressure

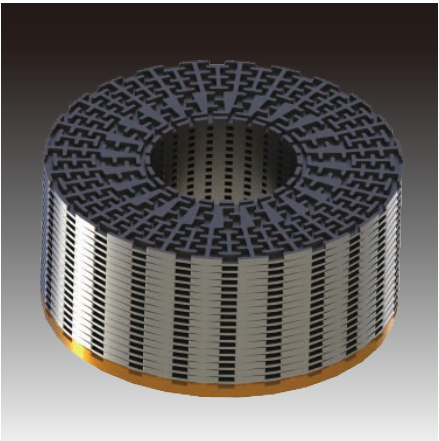
Optional Actuator:

Pneumatic Actuator: PDL and PCL Series  
Electric Actuator: AUMA, ROTORK etc.

CML Series Labyrinth Control Valve Product Range

Size	1-1/2"~20"
Rating	ANSI Class 900~2500
Body Material	CS, SS, Alloy, Duplex SS etc.
Trim material	SS, Alloy Steel and Duplex SS etc.
Face-to-face Dimensions	ISA S75.16 (ANSI Class 900~2500)
Bonnet Type	Standard, Extension, Low temperature
Connection Type	FF, RF, RTJ, LF BW etc.
Flow Characteristics	Linear
Rangeability	50:1
Operating temperature	-196°C~538°C
Operation	Pneumatic, Electric etc.
Design Standard	IEC60534
Valve construction	Globe body. Labyrinth pressure reducing
Leakage Class	FCI 70-2 Class IV, V

For more details, see NEWAY catalog No.E-CSL

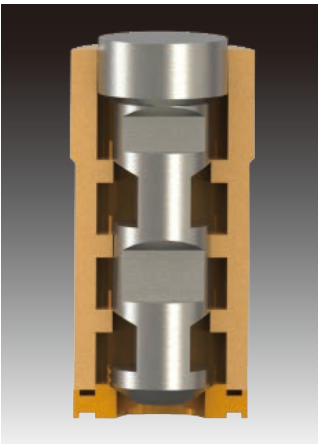


Application:

Petroleum, Chemical, Metallurgy  
Shipbuilding, Electric power, Building materials  
LNG, light industry etc.  
Applicable for high differential pressure and clean medium with relaxed leaking requirements

Optional Actuator:

Pneumatic Actuator: Series NWS etc.  
Electric Actuator: AUMA, ROTORK etc.



Application:

Petroleum, Chemical, Metallurgy  
Shipbuilding, Electric power, Building materials  
LNG, light industry etc.  
Occasion where there are high differential pressure and foreign objects

Optional Actuator:

Pneumatic Actuator: PDL and PCL Series etc.  
Electric Actuator: AUMA, ROTORK etc.

CMP Series Impurity Control Valve Product Range

Size	1"~8"
Rating	ANSI Class 600~2500
Body Material	CS, SS, Alloy, Duplex SS etc.
Trim material	SS, Alloy Steel and Duplex SS etc.
Face-to-face Dimensions	ISA S75.03(ANSI Class 150~600) ISA S75.16(ANSI Class 900~2500)
Bonnet Type	Standard, Extension, Low temperature
Connection Type	FF, RF, RTJ, LF BW etc.
Flow Characteristics	Equal percentage, Linear
Rangeability	50:1
Operating temperature	-196°C~538°C
Operation	Pneumatic, Electric
Design Standard	IEC60534
Valve construction	Globe body and multi-stage pressure reduction(fit for debris service)
Leakage Class	FCI 70-2 Class IV, V

For more details, see NEWAY catalog No.E-CMP



CZP Series Self-Operated Pressure Control Valve

Product Range

Size	3/4"~12"
Rating	ANSI Class 150~600
Body Material	Carbon steel, stainless steel, alloy steel and duplex SS etc.
Trim material	SS, Alloy Steel and Duplex SS etc.
Face-to-face Dimensions	GB12221-2005
Bonnet Type	Standard
Connection Type	RF, LF etc.
Flow Characteristics	Quick Open
Rangeability	30:1
Operating temperature	-60°C~550°C
Design Standard	JB/T 11049
Valve construction	Balanced globe valve
Leakage Class	FCI 70-2 Class IV, VI (soft seat)

For more details, see NEWAY catalog No.E-CZP



Application:

Petroleum, chemical & metallurgy  
Shipbuilding, electric power, building material  
LNG, light industry

Characteristic:

Used in automatic control steam, gases, fluids  
Minor pressure fluctuations and energy efficiency

CZD Series Pilot-operated Control Valve

Product Range

Size	3/4"~8"
Rating	ANSI Class 150
Body Material	Carbon steel, stainless steel, alloy steel and duplex SS etc.
Trim material	SS, Alloy Steel and Duplex SS etc.
Face-to-face Dimensions	GB12221-2005
Bonnet Type	Standard
Connection Type	RF, LF etc.
Flow Characteristics	Quick Open
Rangeability	30:1
Operating temperature	-40°C~80°C
Design Standard	JB/T 11049
Valve construction	Globe body, single seat quick opening and pressure balance
Leakage Class	FCI 70-2 Class IV, VI (soft seat)

For more details, see NEWAY catalog No.E-CZD



Application:

Petroleum, chemical & metallurgy  
Shipbuilding, electric power, building material  
LNG, light industry

Characteristic:

Sensitive response, minor pressure fluctuation  
and energy saving  
Max. pressure reduction ratio reaches 2000:1

CZN Series Double Ported Self-Operated Control Valve

Product Range

Size	3/4"~12"
Rating	ANSI Class 150~600
Body Material	Carbon steel, stainless steel, alloy steel and duplex SS etc.
Trim material	SS, Alloy Steel and Duplex SS etc.
Face-to-face Dimensions	GB12221-2005
Bonnet Type	Standard
Connection Type	RF, LF etc.
Flow Characteristics	Quick Open
Rangeability	30:1
Operating temperature	-60°C~550°C
Design Standard	JB/T 11049
Valve construction	Globe and double-ported body
Leakage Class	FCI 70-2 Class IV, VI (soft seat)

For more details, see NEWAY catalog No.E-CZN



Application:

Petroleum, chemical & metallurgy  
Shipbuilding, electric power, building material  
LNG, Light industry  
Applicable for high differential pressure and clean medium with relaxed leaking requirements

Characteristic:

Fit for automatic control over stabilization of reduced or relieved pressure at steam, gas and liquid service  
Minor pressure fluctuation and energy preservation



Application:

Petroleum, chemical & metallurgy  
Shipbuilding, electric power, building material  
LNG, Light industry

Characteristic:

Sensitive response, high precision and energy efficiency. Min. set temperature is 30mmH2O.

CZV/C Series Micro-Pressure Control Valve

Product Range

Size	3/4"~12"
Rating	ANSI Class 150
Body Material	Carbon steel, stainless steel, alloy steel and duplex SS etc.
Trim material	SS, Alloy Steel and Duplex SS etc.
Face-to-face Dimensions	GB12221-2005
Bonnet Type	Standard
Connection Type	RF etc.
Flow Characteristics	Quick Open
Rangeability	30:1
Operating temperature	-40°C~80°C
Design Standard	JB/T 11049
Valve construction	Globe body and balanced plug
Leakage Class	FCI 70-2 Class IV, VI (soft seat)

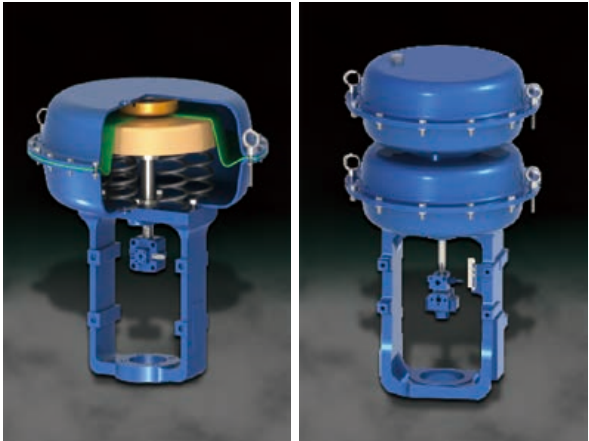
For more details, see NEWAY catalog No.E-CZV/C



Product Range

Type	PDL30, PDL40, PDL50, PDL60
Structure	Single diaphragm, double diaphragm
Rated Pressure	0.3~0.6 Mpa
Spring Range	20~100, 40~200, 80~240, 140~240Kpa
Body Material	CS
Diaphragm Material	NBR+NYLON
Operate Temperature	-40°C~70°C
Handwheel Structure	Top mounted handwheel, Side mounted handwheel

For more details, see NEWAY catalog No.E-PDL

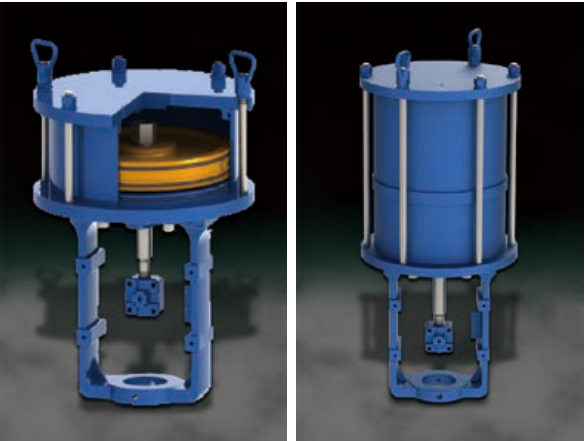


PDL Series Diaphragm Actuator      Double Diaphragm Actuator

Product Range

Type	PCL200, PCL250, PCL300, PCL350, PCL400, PCL450
Structure	Single cylinder, double cylinder
Rated Pressure	0.3~0.6 Mpa
Body Material	CS
Diaphragm Material	NBR
Operating Temperature	-40°C~70°C
Handwheel Structure	Top mounted handwheel, Side mounted handwheel

For more details, see NEWAY catalog No.E-PCL

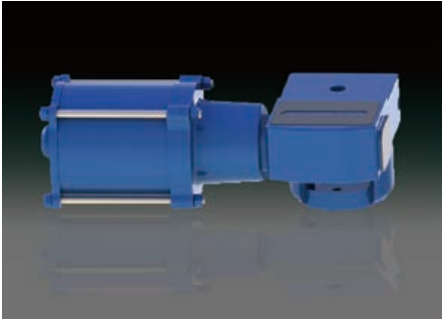


PCL Series Pneumatic Cylinder Actuator      Double Cylinder Actuator

Product Range

Type	PCR, PDR-1, PDR-2, PDR-3
Spring Range	0.5~1.7 kgf/cm²
Body Material	Carbon steel
Flow Direction	Flow to open, flow to close
Working Temperature	-40°C~70°C

For more details, see NEWAY catalog No.E-NW



Series PDR/PCR Pneumatic Roller Actuator

Product Range

Type	NW050~400
Action	Single-acting, Double-acting
Body Material	Aluminum alloy
Rated Pressure	0.3~0.8 Mpa
Working Temperature	Standard: -15~150°C Low temperature: -35~80°C Ambient temperature: -20~80°C
Stroke adjustment	0~90°(±5°)
Handwheel Structure	Single-stage worm drive (SD-1~SD-6)

For more details, see NEWAY catalog No.E-NW



Series NW Pneumatic Rack and Pinion Actuator

Seller will replace without charge or refund the purchase price of products which prove to be defective in material or workmanship; provided that the product is properly installed and is used in the service for which the Seller recommends it and that the written claim, specifying the alleged defect, is presented to the Seller within 18 months from the date of shipment or 12 months after installation, whichever occurs first. Seller shall in no event bear any labor, equipment, engineering or other costs incurred in connection with any repairs or replacement. The warranty stated in this paragraph is in lieu of all other warranties, either expressed or implied. With respect to warranties, this paragraph states the Buyer’s exclusive remedy and seller’s exclusive liability.